

HYWORTH

FORKLIFTS



Watch the
Lithium Walkie
Stacker in action



1.1T Lithium Walkie Stacker

H11WS36

Load capacity
1.1 tonne



Collapsed height
2,435mm



Lift height
3.6m



Manoeuvrability

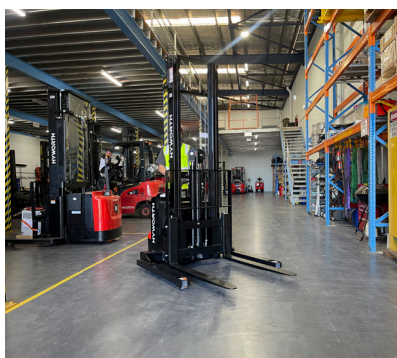


Ease of use





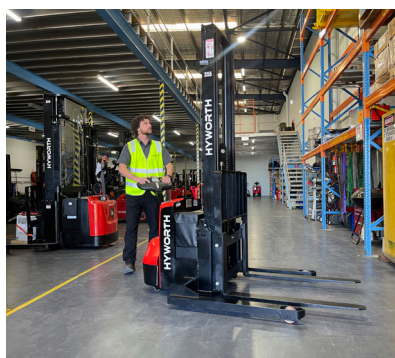
Economical and easy to maintain, the Hyworth 1.1T Lithium Walkie Stacker provides the perfect entry-level forklift for small businesses.



Designed to be comfortable and safe for various operations, this machine is particularly suitable for any businesses new to the warehousing industry.

With no requirement for a forklift license, this model is perfect for small businesses and start-up companies new to warehousing and distribution. This model is suitable for warehouses with single-phase power outlets for charging, flat surfaces and tight racking areas.

Its low maintenance requirements, minimal running costs and long-lasting lithium-ion battery make it the ideal machine for businesses to keep moving and growing with little disruption..



Effortless steering

Seamlessly move around the warehouse with easy and comfortable steering, allowing you to concentrate on tasks such as loading and lifting.

Manoeuvrable

With a compact size, design, lightweight, and a small turning radius, it is ideal for navigating tight spaces and climbing inclines.

Increased productivity

Perform tasks more quickly and accurately with fingertip controls, consistent power, opportunity charging and reduced maintenance.

Simplified operation

Save time and space with a built-in charger, eliminating the need for external charging equipment or separate charging stations.

Long-lasting

The lithium-ion battery lasts up to 6 hours and only takes one hour to charge, so operators can work longer without stopping and recharging.

No forklift licence required

The Hyworth Lithium Walkie Stacker provides flexibility regarding who can operate the machine, which is helpful for ad hoc tasks and more efficient resource allocation

Safety & Ergonomics

Intuitive fingertip controls - New operators can complete tasks efficiently by quickly understanding how to use the controls with little training or experience.

Wrap-around handle - Increase your control and stability when handling tasks with a more natural and comfortable hand position.

Emergency reverse button - Prevents the operator from being crushed in tight environments by enabling quick reversing in an emergency.

Castor stabiliser wheels - Enhance stability and increase operator safety by preventing loads from moving when they must remain stationary.

Easy steering - Seamlessly move around the warehouse with effortless and comfortable steering while concentrating on tasks such as loading and lifting.

Load guard backrest - Avoid falling or shifting loads with a protective barrier between the transported load and the operator.

Efficiency & Productivity

Regenerative Braking - Reduce the time spent recharging your forklift and store energy in the machine for later use with a highly efficient braking system.

Wide leg straddles - Handle a standard 1170mm CHEP pallet with improved stability and greater flexibility, accommodating various-sized pallets easily.

AC drive system - Reduce energy consumption and lower operating costs by optimising power consumption based on the load requirements.

Turtle/rabbit mode - Select between slow and fast speeds, keeping control and maintaining safety when navigating congested warehouse aisles.

Low Maintenance - Reduce maintenance costs and increase productivity with fewer moving parts and less wear and tear than other walkie stackers.

On-demand charging - Reduce downtime and cut costs with efficient charging practices maximising the battery's lifespan and performance.

Serviceability & Reliability

Maintenance-free battery - Save time, effort and reduce downtime by reducing the need for watering or other maintenance tasks.

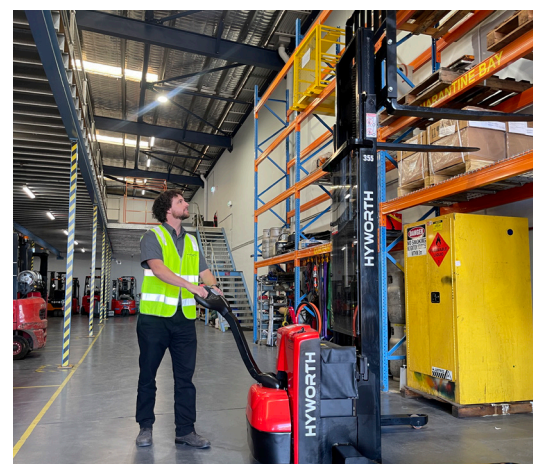
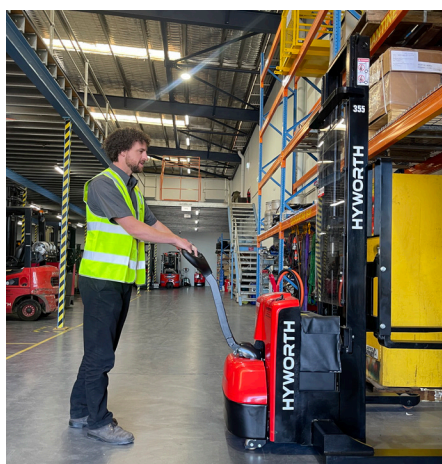
Multi-function indicator display - Enhance operator visibility and safety with easy-to-read data for optimal decision-making.

Low maintenance - Save time and money with few maintenance requirements, reducing the overall need for labour supplies and equipment.

Periodic servicing - Extend the lifespan of your forklift and ensure your equipment is reliable by being prompted after 250 hours or six months when your forklift is due for maintenance.

3-Year Manufacturer's Parts and Labour Warranty - Avoid out-of-pocket expenses, with the added peace of mind that your machine comes with a 3-year warranty.

Fixed price servicing - Budget for your servicing costs upfront and ensure a consistent, reliable service every time with Hyworth's fixed-priced servicing.



Features

Safety/ergonomics

Auto park brake	Included
Load backrest	Included
2nd stage mast auto slow down	Included
Vertical handle driving	Included
Fingertip hydraulic controls	Included
Easy steer	Included
Heavy duty design	Included
Stepless speed control	Included
Flashing LED strobe light	Optional
Blue LED safety light	Optional
Rubber gutter ramp	Optional



Efficiency/productivity

Built-in 240V Charger	Included
AC drive system	Included
Regenerative braking	Included
Maintenance-free lithium-ion battery	Included
Lithium-ion battery technology	Included
Opportunity charging	Included
Slipper extensions	Optional
Load guard customisable height	Optional
Longer fork tynes	Optional

Serviceability/reliability

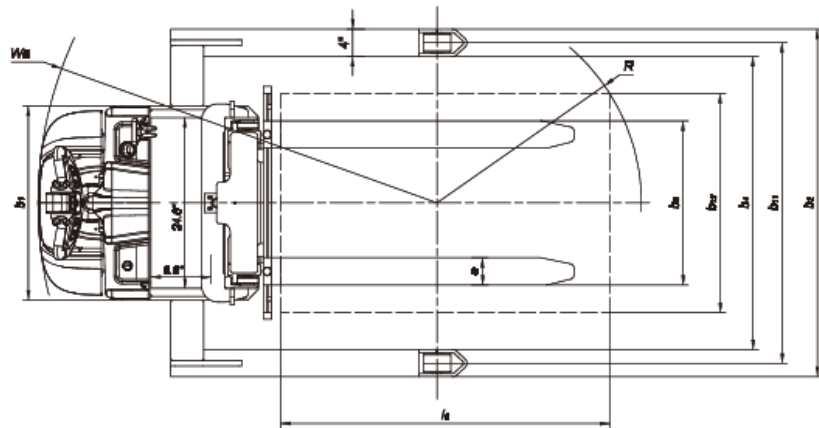
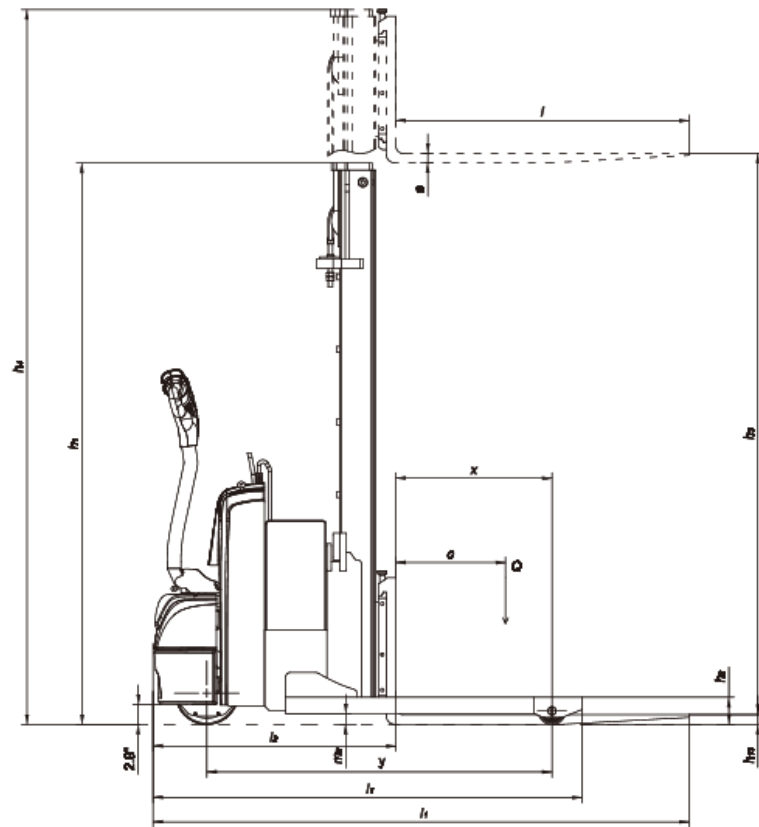
Multi-function battery indicator with built-in diagnostics display	Included
Maintenance-free AC drive motor	Included
Fixed price servicing	Included
3 years manufacturer's warranty - Full parts and labour	Included





Technical Specifications

Distinguishing Mark	1.2	Model Number		H14WS
	1.4	Operator Type		Pedestrian
	1.5	Rated Capacity / rated load	Q (kg/lb)	1400/3086
	1.6	Load centre distance	c (mm/in)	600/23.6
	1.9	Wheelbase	y (mm/in)	1378/54.3
Weight	2.1	Service Weight	kg/lb	1080/2381
Tyres, chassis	3.1	Tyres		Polyurethane
	3.2	Tyre Size: front	mm/in	ø250x80/9.8x3.1
	3.3	Tyre size: rear	mm/in	ø85x70/303x2.8
	3.4	Additional wheel (dimensions)	mm/in	ø125x50/4.9x2
	3.5	Wheel: number front / rear (x + driven wheels)		1x2/4
	3.6	Tread: front	b10 (mm/in)	620/24.4
	3.7	Tread: rear	b11 (mm/in)	1000/1170/1370 (39.4/46.1/53.9)
Dimensions	4.4	Lift	h3 (mm/in)	3600/141
	4.15	Fork height: lowered	h13 (mm/in)	50/2
	4.19	Overall length	l1 (mm/in)	1963/77.3
	4.21	Overall width	b1 (mm/in)	1100/1270/1470 (43.3/50/57.9)
	4.22	Fork dimensions ISO 2331	s/e/l (mm/in)	35x100x1070 / 1.4x3.9x42.1
	4.25	Distance between fork arms	b2 (mm/in)	210-790/8.3-31.1
	4.32	Ground clearance, centre of wheelbase	m2 (mm/in)	40/1.6
	4.34.1	Aisle width for pallets 1000 x 1200 crossways	Ast (mm/in)	2250 /88.6
	4.34.2	Aisle width for pallets 800 x 1200 lengthways	Ast (mm/in)	2300/90.6
	4.35	Turning radius	Wa (mm)	1570/61.8
Performance Data	5.1	Travel speed: laden / unladen	km/h (mph)	5/5 (3.1/3.1)
	5.2	Lift speed: laden / unladen	m/s (ft/min)	0.100/0.160 (19.7/31.5)
	5.3	Lowering speed: laden / unladen	m/s (ft/min)	0.130/0.140 (25.6/27.5)
	5.8	Max Gradeability: laden / unladen	%	6/10
	5.10	Service brake		Electromagnetic
Electric engine	6.1	Drive motor rating S2 60 min	kW/hp	1.1/1.5
	6.2	Lift motor rating at S3 15%	kW/hp	2.2 (3) / 3 (4)
	6.4	Battery Voltage: rated capacity	V/Ah	24/210
	8.1	Type of drive control		AC
	9.1	Manufacturer		CURTIS



HYWORTH® FORKLIFTS

Address: 2/12 Weld Street PRESTONS NSW 2170

Phone: 1300 HYWORTH (1300 499 678)

Email: info@hyworthforklifts.com.au

Web: www.hyworthforklifts.com.au